

MASTER
CONICAL ENGINEERING

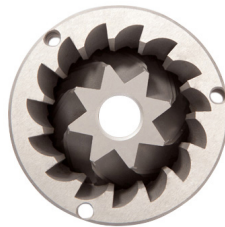
E10 Master Conic OD

INNOVATION INTERSECTS TRADITION

MOTOR 820 W
FRESAS CÓNICAS Ø 68 MM

KEY SPECIFICATIONS

Motor output	820	W
Revolutions per minute	345	rpm
Ø Burrs	Conical 68	mm
Espresso point production	17	Kg/h
Time x dosis Espresso (7gr)	1.6	s
Hopper capacity	1,700	gr
Height x width x depth	680 x 215 x 400	mm
Net weight	20.50	Kg



KEY FEATURES

- ◆ “Parallel System” grind regulator lock
- ◆ 1, 2 or 3 On-Demand ground coffees
- ◆ Precise dosing
- ◆ Touch control screen
- ◆ Double fan
- ◆ Three positions switch with by-pass
- ◆ Universal adjustable height porta filter holder

ELECTRONIC FEATURES

- ◆ Multilanguage Display
- ◆ 3 Modes: Pre-selection - Automatic - Instant
- ◆ Protection menu access by password
- ◆ Total and Partial shot counter
- ◆ Notice of change of Burrs
- ◆ Date and time
- ◆ Quantity lock configurable by weight ground

